



# Ship to Shore

MISSION TO SEAFARERS VICTORIA Inc.

CARING FOR SEAFARERS IN VICTORIAN PORTS SINCE 1857



## 2019 ANL Maritime Art Prize and Exhibition

The 2019 ANL Maritime Art Prize opening night on Thursday 3rd October was celebrated with enthusiasm by the 300 invited guests whose high spirits guaranteed an enjoyable and successful evening.

The exhibition featured 90 finalists whose work was selected from over 250 entries, all of whom responded to the theme *Humanity and the Sea*, and came from as far afield as Germany, Spain, Bangladesh, Pakistan, USA and New Zealand.

Renovations throughout the building's interior were completed just in time for this year's exhibition - including the repair and replacement of the floors, new carpet, freshly painted walls and a new bar finished the very morning of

the opening event. The night brought together a diverse intersection of maritime artists, award sponsors, representatives from the shipping industry, art buyers, philanthropists and other Mission to Seafarers supporters, all with the common purpose of celebrating the winners and recognising the purpose of the Mission in its support of seafarers' welfare.

The awards were presented in four categories on the night, and the People's Choice Award on the 18th October, with a total prize pool of \$26,000. This year's judging panel - Dr. Charles Green, Mr Graeme H. Williams OAM and Ms. Catherine De Boer - were impressed with the high standard and diversity of entries.



*'Tis the Christmas Season*  
- Celebrate in your own way  
and care for others.

Thanks to Joanna Aldenhaven for the decorations.

The ANL Maritime Art Prize and Exhibition is a fundraising initiative of the Mission to Seafarers and is only possible thanks to the generosity of our sponsors who provide the prize money and other in-kind contributions. Not to be forgotten are the artists, many of whom support the exhibition with entries every year and pay an entrance fee, in addition to a 33% commission on all works that are sold.

*Details page 4 and 5 >*



Winner Maria Kontis and Nigel Porteous, MtSV Vice Chairman – *The judges chose Mary Kontis' piece as the best of show as it not only showed masterful control of the technique involved but also with its wonderful idea of illustrating "The Relationship of Humanity to the Sea"*.

*"I thank the Mission to Seafarers, ANL and the exhibition sponsors for a most generous award. Really, this a wonderful help to me. This award will support a significant period of research and the development of a body of work inspired or informed by the photography collections of various institutions in Victoria including the Heritage Collection at the Mission to Seafarers. This is the kind of work I have been wanting to do for a long time but have not been able to do. Without this award it would not be achievable. This kind of generosity seems to me to be intimately a part of the Mission to Seafarers - it is in some way the very meaning of such a mission. This generosity from ANL is at the heart of what is best about corporations. Thank you."*

Maria Kontis



## Chief Manager's message

### Phew - another year at the Mission!

Another year is almost over and we have had so many ups and downs this year. So many Seafarers have crossed our threshold and been greeted by our wonderful team of volunteers and staff. Others who haven't been so fortunate to get shore leave have had the benefit of having a visit from one of the Ship visiting team. Rev'd Inni, Swee Fah, Tony, John and Simon have been up and down so many gangways, I'm surprised at the fitness of all of them.

The Mission volunteer team have seen a number of people come and go, with those joining us to help out, and others who have resigned due to health or family reasons - a huge THANK YOU to you all. Sadly, Alan Tarpy died earlier this year, and we do miss his charm every Sunday.

The clubrooms have seen a complete transformation just in time for the ANL Art Exhibition, and thank you to everyone who has commented on how the new look makes the place 'feel' great. With new carpet, a new solid floor, the refurbished bar (thanks Alex and Ben), and the plants being cared for by Cheryl it does make a nicer place to come to work - even with the dust and hammers. The renovations will be with us until April, as the full facade will be re-rendered, and for those on our social media channels you can see the work progressing.

The Heritage room now is in place (see next page), and we are looking forward to holding a number of exhibitions across 2020. The Garden will be re-opened in the New Year after extensive works on the Manse and Chapel exterior, including reinstating the ornaments that used to adorn the building in times past. Concrete cancer and the wind had damaged them to the point of removal. The weather vane will also go back up due to the generosity of a donor and the Victorian Heritage Fund. The Chapel windows will be restored, also due to another grant received.

The Heritage Team, under the guidance of the Committee Chair, Gordon MacMillan, has been working with Wind and Sky productions on a film commemorating

the work of the Merchant Seafarers and the Ladies of the Harbour Lights Guild during WWI and we are looking forward to sharing this with you in February. They have been gallant in their efforts as the disruptions to their work during the renovations has been significant. In the next month or two we will be setting up the former baggage room as the new archive room as the works will be completed in this space, however it will not be complete as we still haven't been able to secure grants for the right furniture to help to conserve and protect the archive items. If you can help, please get in touch.

As always the heart of our Mission is hospitality and we continue to be there for the Seafarers. We have made hospital visits, driven Seafarers to appointments, Bunnings, tool shops; directed them to restaurants, shops, places of interest; ensured they have the right cash, phone cards, and most importantly someone to talk to. This year we have been fortunate to commence working at Station Pier for the Cruise Crews. See page 13 or Tony's report.

During the year Inni and I attended the Regional Conference in Brisbane of the Mission to Seafarers, where Secretary General Andrew Wright outlined the international plan for the Mission, and we heard from the Global Regional Directors on their particular challenges. Abandonment, abuse, under payment, slavery, piracy are all issues that Seafarers face, and the Mission globally is on the front line helping as only we can. The

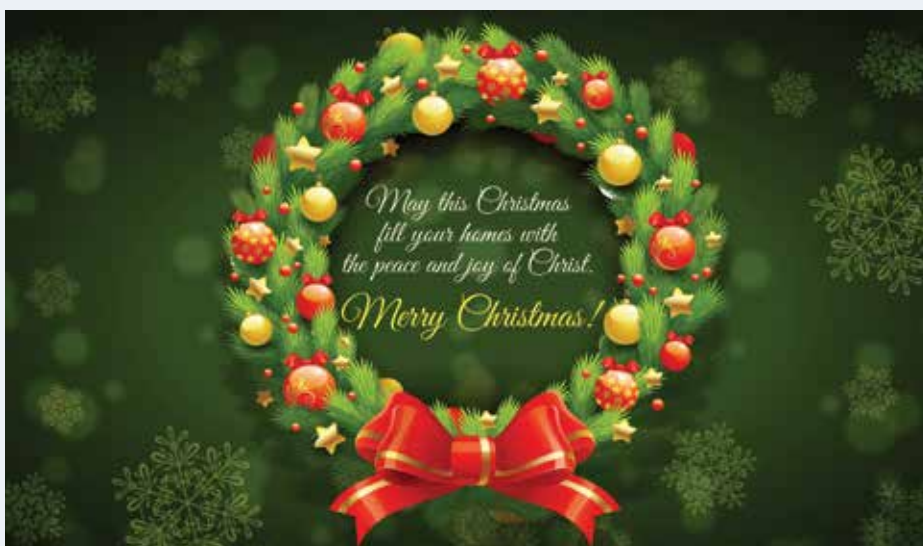
Australian Missions vary in size from some that open on when a ship is in port, to others like Melbourne - open everyday. Each faces financial challenges, as we all work towards changes in the donor landscape. Business plans are being developed so that we are helping each other as family to grow and work together.

We continue to open our doors (now from 9am for crews and even at 5am for a early crew changeover) to any visiting or local Seafarer and the community. Keeping the doors open is a continual challenge one that with all of your help it is made easier.

This year the Mission team have worked so hard, with moving and carrying on, and with more changes afoot, they will be challenged again in 2020. We will be working on becoming more self sufficient by hosting more functions, gathering more corporate partners, as the challenges of fundraising are becoming harder. We aren't there yet, so any donation, no matter how big or small is appreciated.

Have a wonderful Christmas with your family and friends, and keep your eyes open for opportunities to come to the Mission to be with us on our many engagements for 2020.

[Sue.dight@missiontoseafarers.com.au](mailto:Sue.dight@missiontoseafarers.com.au)





# An Evening of Sea Shanties Raises Funds for MtSV

By Daria Wray

On a blustery evening in November, local group *Shantily Clad* performed their wide repertoire of sea shanties to an enthralled audience.

Gathered together by the charming Captain Ed, this rag-tag crew of misfits blended gorgeous harmonies and larrikin wit in their crowd-pleasing performance that embraced the glorious acoustics of the Norla Dome.

The evening was a resounding success and all proceeds were generously donated to the Mission for the purchase of LED stage lights for the Dome.

[shantilyclad.com](http://shantilyclad.com)



*The Mission to Seamen's Institute, Siddeley St c.1910*



## The Mission's Heritage Centre Finds a Permanent Home

By Jay Miller

In 2018, with the support of the Helen Macpherson Smith Trust, our project officer Geraldine Brault assisted in providing access to some vulnerable images in our Heritage Archive that date from the early 20th century. This improved our capacity to open up the collection via the Victorian Collections database and also to researchers such as Dr Uma Kothari, a visiting academic at the University of Melbourne.

In 2019 Dr Kothari, working with Australian artist Nick Walton-Healey, delivered and donated the inspiring and insightful exhibition 'Encountering People, Places, Things'. Featuring archive and new photographs the exhibition was displayed in the Norla Dome and throughout the building during winter, before closing to make way for long-awaited building renovations which finally commenced in mid 2019.

Happily, with the first phase of the renovations to the ground floor substantially completed we have now been able to remount selected highlights of the 'Encountering People, Places, Things' exhibition in the newly opened permanent Heritage Centre in the old Billiard Room.

The exhibition will remain in place until the end of January 2020 and is accessible to friends, seafarers, tourists and volunteers at the Mission throughout this busy period and also offering the chance to view some additional heritage collection items. We hope Ship to Shore readers will take time to visit and discover and enjoy some of our image treasures.

We are very appreciative of Dr Kothari's support of the Mission and her assistance, especially in collecting and delivering the very same trowel (now on display) that laid the foundation stone of the historic building that is now gradually being returned to some of its former glory.

*Due to the temporary re-location of the Heritage Archive collection, it has been necessary to suspend access by visitors for the duration of the continuing renovation program. Any research or information enquiries can be forwarded to Jay Miller or Geraldine Brault who will respond as soon as possible by email:*

[curator@missiontoseafarers.com.au](mailto:curator@missiontoseafarers.com.au)



# 2019 ANL Maritime Art Prize and Exhibition

## And the Winners are...

### ANL Maritime Art Award 2019 \$15,000 Acquisitive

**Maria Kontis:** *Barely surviving and merely looking on* (pastel on paper)

Maria Kontis has participated in group exhibitions since 2000 in Australia and Europe and has held ten solo exhibitions. Her work is held in the UBS Art Collection, Switzerland; The University of the Arts London; National Gallery of Australia; and Art Gallery of New South Wales.

Judges comment: *"A deceptively humble, relaxed work with great pathos and ambition, but phrased in a unique artistic language. Using a virtuoso technique, it fulfils the brief of the prize admirably."*

### ASP Best Traditional Maritime Art Award \$5,000 Acquisitive

**Jenny Viney:** *Men at Work* (watercolour on canvas)

Jenny Viney is a landscape artist working mainly in oils and who has exhibited and sold works throughout Victoria. Viney is inspired to portray her own personal vision of the everyday through her works.

Judges Comment: *"This painting explores the intimate connection between industry and shipping, reminding the viewer that many ports around Australia are located in remote places of great natural beauty."*

### Nevile & Co Runners Up Award \$2,000

**Barbara Tyson:** *Weight of Living* (oil on canvas)

Barbara Tyson has been actively painting and exhibiting for over 30 years. She continues to educate herself on painting, studying the textures and depths of oils and embracing portraiture and still life, emphasizing the play of light. Tyson's work has made its way into the hearts and homes of many art collectors and she was also the winner of the Maritime Art Award in 2016.

Judges Comment: *"Weight of Living' combines a modernist collage of nautical allusions with an inventive and almost shockingly bold composition."*



## VICT Emerging Artist Award - \$2,000 Acquisitive

**Raj Panda:** *Looking Back to Look Forward* (acrylic on canvas)

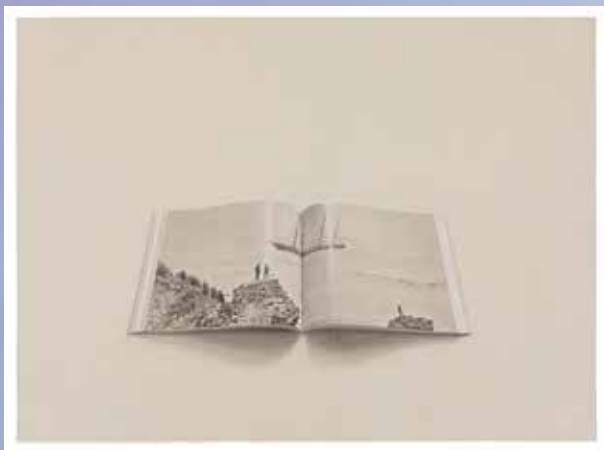
Raj Panda is a Sydney based self-taught emerging artist working in acrylic, gouache and ink mediums. He was born in India in 1984 and moved to Australia in 2007, initially taking up art as a tool to cope with depression, it is now his voice and passion.

## Viva Energy People's Choice Award \$2,000

**Jenny Laidlaw:** *The Light Will Guide You Home* (pen on paper)







2019 ANL Maritime Art Award Winner Maria Kontis' piece:  
"Barely surviving and merely looking on"



Artists and friends at the 2019 ANL Maritime Art Prize Exhibition



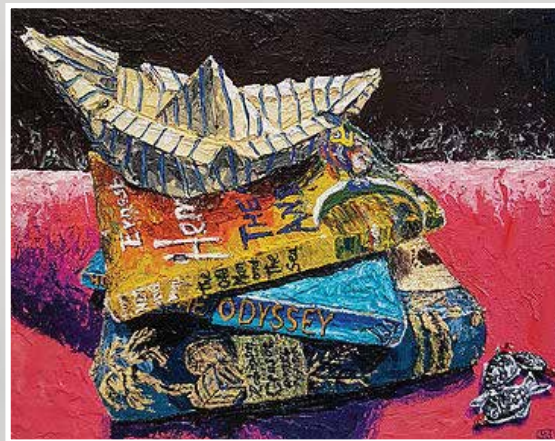
ASP's Phil Jones, *Industrial Relations and HR Manager*, with Jenny Viney's *Men at Work*



Jenny Laidlaw's People's Choice Award winning,  
*The Light will Guide You Home*



Jennifer Shaw (purchaser) and Barbara Tyson (right)  
with the award winning *Weight of Living*



Emerging Artist Raj Panda work,  
*Looking Back to Look Forward*



Kristen Richardson, ANL Head of Communications  
and Guests



# Notes from the Garden: Summer 2019

By Maureen Scoble

Well, this should really say "Notes from Half a Garden" as everything else is still in pots. The renovations are ongoing so I am (im)patiently waiting for everything to be completed so I can put all the plants back in the ground. I was hoping that would be before summer, but I believe now it will not be finished until January. Poor plants!

The builders are being as careful as they can with the garden but they need to complete the rendering so I will try to stay positive and keep in mind how necessary this renovation is. And we are actually quite lucky because half the garden does look okay. The plants unaffected by the building renovations are growing well and I hope will perform beautifully over summer.

I have put lots of my favourite plants in and some of them are doing well. I guess most of you know I am a Salvia 'nut' and there are hundreds of salvias that do well in many different situations - we just have to figure out which ones like the Mission.

So far, I have three winners...one is called Salvia Armistead and it has purple flowers and grows about one metre high. The other favourite is Salvia Oxyflora which also gets to one metre high and spreads a little bit, which I like. In the shade I have planted Salvia Miniata which is bright red and quite tough. Last year I put in a couple of Salvias from the 'Heat Range Series' and they're now under the scaffolding, but from what I can see they are growing well and look like they might flower soon. The last salvias I put in were from the 'So Cool' range - blue/mauve/purple colours and are tough in my garden so I hope they will do well at the Mission. It's not all Salvias! I put in lots of Herbs, Violets, Stachys, Feverfew, Ferns and a couple of daisies.

In the Courtyard, we have re-potted the camellias that are in the big pots. They flowered this year and looked so pretty but need some TLC. When the renovations are finished, I have some lovely new plants from my own garden that I want to try. I never get tired of gardening, so I hope I don't bore you all to death with my plans and projects.

## Renovations at the Mission – Now and Then



By Jay Miller

As the renovations of our glorious heritage listed building continue apace, enduring months of scaffolding is certainly nothing new.

Taken in 1906 during the construction of our first central mission near the (present day) Seafarers Bridge, we can see the scaffolding being inspected by two ladies and five seafaring lads.

The scaffolding on our current building - 102 years after the opening in 1917 - is all part of our long-awaited renovations. One thing in common is lots of dust!



Photo top: Simon Burton

# Seafarers of the Mission

Krislen James Carumba, Third Officer *Bea Shultte*

By Simon Burton

*All quotes attributed to Krislen James Carumba*

Krislen is a Third Officer currently working aboard the *Bea Shultte*, a 264-meter container ship that is operated by Bernhard Schulte Ship Management. She sails every six weeks from Singapore, then clockwise around Australia docking at the capital cities loading and unloading containers.

Krislen had a carefree life as a boy. His parents were professionals – his father an army officer and mother a teacher. “My older brother, my younger sister and myself were well provided for. I was good at school and my secondary teachers wanted me to become a scholar. But clouds appeared and storm overtook our family. Circumstances resulting in my mother having to provide for the family by herself”.

Tertiary education in the Philippines is relatively expensive, unless you can qualify for a highly sort after scholarship. Krislen’s brother had already started university and as the family could not afford for two children to study, he had to wait.

Eventually Krislen enrolled at Mindanao State University in Manila and began his freshman year and, being good at maths, he intended to study accountancy. “Everything was going well until I went home to visit mum and my little sister and realised that they were not coping by themselves. I decided straight away that I had to quit uni and return home. But I was unsure about what to do next. Luckily my Aunt’s husband is a Seafarer and they suggested that I think about a career in the shipping industry”.

The University of Cebu, Maritime Education and Training Center offers Bachelor of Science in Marine Transportation. The course runs for three years - two years studying then a one-year cadetship on a vessel. Successful applicants receive scholarships with partnering shipping companies that account for all the fees and costs. In return, these companies require that their sponsored graduates sign on to work for them as officers for a further five years. Philippines maritime colleges are similar to military colleges. Cadets live in spartan barracks follow a very disciplined regime, and their training is highly demanding.



“I felt that is was my last chance to get a good qualification, So I sat the entrance exam and despite lots of competition was accepted! It was a wake-up call for me as the discipline and training was really tough, but it gave me confidence that I could build a career. And my classmates became my brothers”.

Krislen graduated in 2015 and is now married and has two young daughters. “Thank God for the advent of mobile phones and video calls. Being able to see each other is making a huge difference despite only having internet access when we are in port”.

Krislen is over halfway through his six-month contract. The *Bea Shultte*’s timetable is relentless. “Before I know it, I will have three months leave and be together with my family and have the chance to get to know my seven-month old daughter”.

“Melbourne is great! I have a Fillipino friend who lives here. It is one of the few ports with a Flying Angels on-call bus service. It makes it possible to meet my friend at Seafarers Mission and go out for a meal nearby and still get back in time for watch duty”.

Krislen is optimistic about his life as a Seafarer. “Why not keep aiming high, you might just make it. Maybe I can be captain one day. But first, there is ongoing training programs to complete. And, as it always is with the Filipino Seafarers, competition is fierce”.

Krislen remembers the first time he spoke to his mother after commencing maritime college – “Mother it is true, what they say. There are rainbows after the storms. She cried really hard”.

---

*This article is also featured in ‘Seafarers of the Mission’ – an ongoing project featuring editorial and images by Simon Burton. Visit [simonburtonproducer/myportfolio.com/](http://simonburtonproducer/myportfolio.com/)*



# Seafarers' Service at St. Paul's Cathedral

By Nigel Porteous

The annual Seafarers' Service, held in conjunction with the Royal Australian Navy (RAN) and the Company of Master Mariners, was held in St Paul's Cathedral on Sunday October 20th and was attended by a large congregation. This event has been held each year since 1907, originally to commemorate *Trafalgar Day* on Oct 21st.

The Service this year was conducted by the Acting Dean the Venerable Canon Heather Patacca, together with the Acting Precentor, Rev'd Canon Christopher Carolane. The Guest of Honour was the Senior Naval Officer Victoria, Commodore Greg Yorke CSC RAN, who laid a Wreath in "*Remembrance of all those who have lost their lives at sea*".

The Sermon was delivered by the Mission to Seafarers' Board member Rev'd John Sanderson and MtSV Chairman Neil Edwards AM, and Capt. David Garnock CSC. RAN (Ret.) read the two lessons.

Various prayers were read by Capt. Ian French (Master Mariners), Capt. Nigel Porteous (MtSV), and Cmdr. Terry Makings AM RAN (Ret.), together with Commanding Officer ANC, Lieut. Loretta Coste.

The *Act of Remembrance* and the *Ode for the Fallen* were given by ANC Cadets PO Trent Collins, and Steph Parsons.

Five Naval Cadet units, TS *Bataan*, *Barwon*, *Melbourne*, *Tingarra*, and *Voyager* participated in the service, parading the Special, National, and Shipping Industry flags, with the RAN White Ensign, paraded by the RAN *HMAS Cerberus* Guard of Honour.

Photos: Simon Burton





# Penniless Cadets and the Mission

By Jay Miller

In September this year, Chief Manager Sue Dight was delighted to hear from a seafaring cadet of yesteryear. Mr Charles Treleaven of Williamstown and now aged 87, has strong memories of the warm hospitality that was offered to penniless cadets in the 1950s by various branches of the Mission to Seafarers in Williamstown, Geelong and here at the Melbourne Mission on Flinders Street.

As Charles recalls "It was during this time I discovered the delights and hospitality of the Mission...I have such happy memories of the Flying Angel Clubs...really home away from home for us broke cadets...and we are still thankful for the skills learned playing ping-pong and billiards."

Charles worked aboard the British ship the *SS Saint Gregory*. Built during wartime and then commissioned to bring coal from Calcutta to Melbourne during the strikes of 1950, it then discharged it at the Gas Works formerly off Flinders St Extension. On the same trip they loaded coal fuel bunkers from a coal hulk called the *Rona*.

Charles in later years went on to make a significant contribution to the maritime history of Melbourne. "Little did I realise that in later years I would become a CEO and lead the restoration of the vessel *Rona* which we now know today with her original name as the *Polly Woodside*". Moored just across from the Mission, on the River Yarra, the *Polly Woodside* regularly undergoes maintenance carried out by a devoted team of volunteers and is owned by the National Trust of Australia.

The preservation of these two significant historic features on the south and north banks of the river – both linked by the contemporary Seafarers Bridge – are important repositories of memories for so many people like Charles and the dedicated workers and volunteers of the Flying Angel Club and the Mission, who have added to the maritime heritage of the area throughout the 20th and 21st centuries.

We will ensure that Charles' memories are preserved in our Heritage Archive together with the images featured here. Many thanks Charles!

If you have memories and stories of the Mission to Seafarers or your time at sea to share, the Heritage team would love to hear from you [info@missiontoseafarers.com.au](mailto:info@missiontoseafarers.com.au)



*Polly Woodside*



# Painting herself out of a corner

*Nyulla Safi was born in France but immigrated to Australia when she was 15. Ever since she was a young child she wanted to join the Army, so that's precisely what she did soon after leaving school. This was the early 1990s when very few women enlisted.*

But in mid-1993, Nyulla was medically discharged with severe post-traumatic stress disorder (PTSD) and a bad back injury. Shortly afterwards she had her second child as a single mum - raising two kids while suffering from an acute mental illness. They were hard years and was as much as possible a recluse.

It took her many years to do so, but Nyulla eventually reached out to DVA and sought psychological and rehab support. This helped, but she was still finding life difficult. She often struggled to leave the house and suffered from frequent night terrors.

But a transformation came in mid-2019 when she discovered painting.

'I woke up one morning, my demons, the nightmares had visited [during the night] and I had really lost faith in humanity,' so she searched the internet to see if there was someone else out there who thought the same as her. She accidentally came across Mission to Seafarers Art Prize competition.'

'So I thought, oh, painting, how hard can it be? I'll enter the competition. I didn't know where to start. How do you paint? And then something happened. My hands, my heart, my feelings, everything just collided. I sent off that first painting and forgot about it.'

She carried on painting and found that it focused her mind and calmed her down. Nyulla describes her discovery of painting as a 'Godsend'. She can't force herself to paint, and often finds herself staring at the canvas for long periods. But once she gets going, the process puts her in a different zone in which her PTSD has no place. For instance, the number of nights per week she experiences night terrors has halved, and she's getting out more, such as to buy painting materials or to seek inspiration. She paints every day and describes it as an 'addiction, but a good one'. And not that it matters, but her paintings are by anyone's standards, very good, especially given that she has had no training. The closest she got was in Year 12 when she was, ironically enough, thrown out of a lunchtime art class because her teacher felt she lacked any ability.

When she received an email from the Mission telling her she'd made the finals, she thought it was a joke. And she went to the finals event, which was hard for her. One of the things that made it possible was the support from people at the Mission to Seafarers, in particular Cinda Manins. 'She's fantastic,' says Cinda. 'I'm so impressed by her. She communicates beautifully, verbally, in her writing, but also in her painting. I've said to her that this is a positive way to redefine yourself. Become Nyulla the artist, not Nyulla with PTSD.' Painting hasn't cured

Nyulla of her PTSD but it's diminished its impact and provided her with a future. She is applying for grants, submitting her paintings to other competitions and her work will appear in a book being published in London. She is proud of what she's achieved, and she has plans.

*'Originally published in the Department of Veterans' Affairs newspaper Vetaffairs'.*

*Image: Nyalla Safi - PTSD, Ocean Tide*



*Your industry super fund*

Maritime Super is one of Australia's longest running super funds having provided financial security to generations of members.

We're also part of the Industry SuperFunds collective that carry the symbol you can trust — run only to benefit members.

We're all about helping members make the most of their super, that's why we are the fund of choice for maritime workers.

To learn more about Maritime Super or how to join — call us on **1800 757 607**



# Annual Christmas Appeal

A Christmas tradition at the Mission to Seafarers is to distribute 'Bags of Christmas Cheer' for those seafarers who will be at sea on Christmas Day. This year we're hoping to receive enough of your donations to fill 400 bags of goodies.

## Some examples of suitable donations include:

### Personal:

toothbrush and toothpaste, soap, deodorant, comb, handkerchiefs, razors, aftershave

### Souvenirs:

fridge magnets, set of coasters, caps, key rings, a small soft koala/kangaroo or similar

It is wonderful to see the look of surprise and happiness on the faces of the seafarers when they receive their 'Bags of Christmas Cheer'. Any contribution from you is greatly appreciated and can be delivered or dropped off at the Mission from Monday 2nd December.

### Small gifts:

chocolate bars, packs of unrefrigerated cheese and biscuits, small packets of sweet biscuits, pocket note book and pen sets, small Christmas decorations seafarers can place on a desk or hang in their cabin, bags of lollies and sweets

### Bags:

we have a few shop brought Christmas bags, but perhaps you could make simple draw string bags about the size of an A4 page that can be used by the seafarers for a toiletry bag or similar.

### Other items:

knitted beanies, pocket size New Testaments, or even a lovely personal touch like a Christmas card from you or your family with a message that the seafarers and their families are being thought of at Christmas.



## Third Mate Lily

*By John Winkett KSJ, Ship Visitor*

Lily is one of four women on board the *Ever Dunlop* and is the ship's Third Mate. Lily comes from Chiayi in Taiwan and has been a seafarer for two and a half years. She really didn't know what to do when she left school but was persuaded by a teacher to consider the Merchant Navy. Lily completed a marine degree at university and has a special interest in navigation. Like most seafarers, Lily doesn't get a lot of time ashore, but loves to visit local restaurants whenever she can.

---

*The Mission's ship visiting team offer a warm welcome and whatever help is needed - from having a chat, to offering comfort and assisting in cases of injustice and distress.*

*If you're interested in volunteering your time and joining the team, please contact us as below:*

717 Flinders St, Docklands VIC 3008  
info@missiontoseafarers.com.au  
(03) 9629 7083



# Mission to Seafarers Secretary General Rev'd Andrew Wright Visits Melbourne

*By Nigel Porteous*

The global head of the Mission to Seafarers, Rev'd Canon Andrew Wright, took time during his busy Australian tour to visit the Melbourne Mission in mid-October, attending a board meeting and formally opening the refurbished Main Hall of the heritage-listed building.

Joining the MtSV Board on Tuesday 17th October, Rev'd Wright gave a most constructive talk on the new initiatives being taken by the Mission to Seafarers globally to meet the current needs affecting seafarers and their families. He also spoke of other changing circumstances the organisation must meet to be effective and constructive in our work, and of additional Missions that were being opened in different parts of the world.

The following day, the Main Hall was re-opened with many government, senior shipping executives, board members and volunteers attending the event. Guests were especially delighted to welcome staff and volunteers from the Hastings and Portland Missions, who had travelled to Melbourne especially for the occasion.

MtSV Chairman Neil Edwards AM, introduced Rev'd Wright to the guests who then delivered an address explaining the significant history of the building relating to the Mission to Seafarers in general and its long history of service supporting seafarers' welfare for the past 102 years. He also gave an overview of the current work being undertaken by the Mission to Seafarers globally.

The formalities were followed by a reception and afternoon tea during which time Rev'd Wright chatted with the Mission's principal partners, and took a special interest in the lives of the many MtSV volunteers in attendance. He then travelled to Geelong with Rev'd Noah Park to meet with members of the Geelong Mission.



*MtSV volunteers and staff with Rev'd Wright:  
Rohit Sharma, Tony Corell, Alexandra Edwards, Huw Edwards,  
Andrew Kutzer, Ron Hereford, John Winkett, Nick Trehwella,  
Cheka Samaranayake, Rev'd Canon Andrew Wright, Sue Dight,  
Johnny (Boyu) Wang, Neil Edwards AO,  
Ben Schroeder, Daria Wray, Ken Dusting, Ian Fletcher,  
Micheal Rossi, Ajith Jayasuriya, Mick Molony.*





# MtSV's New Hub at Station Pier

By Tony Correll

The Melbourne Mission to Seafarers has long sought to provide for the crews of the Cruise Ships which berth at Station Pier from October to April each year. The passengers are whisked away in buses to several places of interest whilst the crew are left to fend for themselves – on one occasion, a crew member arrived at the Flying Angel Club having borrowed a bicycle and ridden to 717 Flinders Street.

Buoyed by Sydney's Mission to Seafarers successful setting-up of a drop in centre in 2018, we were determined to make it happen in 2019. Beginning in June we approached Vic Ports Melbourne and Visit Victoria to garner support. Parallel to this, the City of Port Phillip, through its Placemaking Division, were seeking ways to improve services and experiences for cruise ships coming into Station Pier. The first meeting of the interested parties took place in August in *Mr Hobson* restaurant in Waterfront Place, and all attendees deemed the concept feasible and each went away to confer with their organisations.

We at the Mission saw the wellbeing of the crews as our first priority, followed by catering for their needs which are similar to those of the cargo ships that we already minister onboard and at our centre in Docklands. *Mr Hobson* has proven to be the most homely environment for the crews - the owner Sam



has opened his ground floor reception room for our use, and provided comfortable lounges and options to buy drinks or food. *His generosity would be richly rewarded by any of our readers' patronage.*

Over 200 crew from nine cruise ships have already visited the drop-in centre and made use of the free WiFi to talk with their families back home. The City of Port Melbourne has set up a mobile phone app that gives them guidance to the local area and good discounts to local businesses. We normally have two staff on duty so that one is always available to chat with the crew while the other serves behind the table providing the same services as at Flinders St - selling SIM cards, exchanging money, free books, knitted beanies and scarves, stuffed toys and Melbourne souvenirs.

*If you're interested in joining the volunteer team to welcome these crew members (or perhaps you know someone who lives near Port Melbourne who might...) please contact [info@missiontoseafarers.com.au](mailto:info@missiontoseafarers.com.au)*







## From the Chaplain – Rev'd Inni Punay

### Global Networking in Taiwan and the Philippines

In October, on the back of the National Mission to Seafarers Conference in Brisbane, I attended the 11th World Conference of the International Christian Maritime Association (ICMA) in Kaoshiung, Taiwan. This conference was also the 50th Anniversary of ICMA so it was extra special. Taiwan Channel News even broadcast the proceedings and conducted interviews.

Hosted by the Presbyterian Church, as one of the three official delegates of MTS Australia, we spent four days learning about the global network and issues. It was an eye-opening experience for me to see that what we are doing here in Melbourne for the seafarers, is also being done globally. It was an amazing experience to watch and be part of all the International Organisations working for seafarers' welfare and reflecting together as one.

I then visited the Mission to Seafarers in Manila, Philippines, for the first time. I had a long chat with Ms. Lala Tolentino, the National Coordinator with whom I shared and learnt some insights on how to best care for Filipino seafarers and their families. Reverend Noah Park of Mts Geelong and I stayed in a hotel at the heart of the "seafarers' hub" in Manila where we mixed with lots of hopeful seafarers (to be put on the list to go on board ships) and seafarers who are about to board ships (processing certificates and paperwork).

### Christmas, the Mission to Seafarers, and Hospitality

*"He came to that which was his own, but his own did not receive him. Yet to all who did receive him, to those who believed in his name, he gave the right to become Children of God." John 1:11-12*

This part of the Bible is read during **Lessons and Carols** for Christmas Day celebrations. It is to remind us about the meaning of Christmas or the celebration of birth of Christ. Working at the Mission to Seafarers as a Chaplain has gifted me a different perspective on how I look at these Bible verses.

The work of the Mission to Seafarers has always been about hospitality. It is about welcoming seafarers to the city and the Seafarers' Centre is for them to use as their home away from home. Volunteers or staff are always in place to be the 'host' to welcome them as 'guests'.

As a Chaplain whose main job is to visit the seafarers on their ship (those of whom can't go out from the ship for many reasons), a welcome to the city is also imparted as well as provision of some of their practical, emotional, or spiritual needs. This often depends on the hospitality on-board the ships and sometimes ship visitors are not welcome for various reasons. In these cases, no 'hosting work' is done.

Hospitality in the Bible has always held the dynamics of the interchangeability of the 'host' and the 'guest' such as the above bible texts. Jesus Christ came into this world as a 'guest' but then He ended up being the 'host' and for those who welcomed Him, **'He gave the right to become Children of God'**. They are no longer guests but members of the family. Ultimately, it has always been God's intention for us to be 'hosted' by Him even though this relies on us welcoming Him first as our 'guest'. Everything belongs to him including after all.

Merry Christmas.





# THANK YOU!

MtSV can only continue its work with the support of donors.

We offer our thanks to the following knitters, groups and organisations for their recent donations:

## Beanies

- Girls' Friendly Society (GFS), Ballarat and Mrs Wendy Veal (pictured) who has knitted hundreds of pure wool beanies over the years for the Seafarers Mission
- St Barnabas Mothers Union, Glen Waverley
- Fraser Group of the Country Women's Association (CWA)
- St. Augustine's, San Remo
- Anglican Mothers Union Australia, Bendigo and Sunbury
- Joanna Aldenhoven for the fantastic Christmas ornaments we're selling to raise money for the seafarers
- Offshore and Specialist Ships Australia (OSSA) who have generously donated a new BBQ to the Mission after our appeal in the last issue. Additional funds went to making sure the courtyard is looking glorious again with new fairy lights and fresh potting mix for all of the flowers
- Moorabool Shire Council and Jeanetter Licciardo for saving and sending stamps from their envelopes to us



## Letting your legacy live on

Leaving a gift to The Mission to Seafarers in your will is a wonderful way to celebrate all the joy in your life by supporting those who sacrifice so much for us at sea.

Your donation will help the team to be there when seafarers need them most. You can help us to fight for the rights of abandoned seafarers, to care for victims of piracy, to give advice and help to support the seafarers experiencing the mental strain of life at sea.

A gift of any size will make a real difference to the 60,000 seafarers who come to Melbourne and who risk their lives to bring us the vital goods we need to survive.

Please contact Sue Dight to find out more about leaving a tax deductible gift to The Mission to Seafarers Victoria in your will by emailing: [sue.dight@missiontoseafarers.com.au](mailto:sue.dight@missiontoseafarers.com.au)



For only just \$1 per week, your membership helps the Mission provide services to those who work at sea.

### Membership benefits include:

- Discount on alcohol at the Mission to Seafarers Bar
- One guest ticket to the Members' Private Preview Evening of the ANL Maritime Art Prize and Exhibition
- 10% discount on venue hire and event packages including Norla Dome or Celia Little Room for private dinners, parties and corporate seminars; and St Peter the Mariner Chapel for weddings and other ceremonies
- Free use of the BBQ in the Spanish style courtyard (booking required)
- Invitation to the annual Seafarers Service at St Paul's Cathedral in October
- Copy of "Ship to Shore" magazine
- Regular member promotions, discounts and events

Renew or join now and your membership is valid for 12 months.

Our website has the full details: [missiontoseafarers.com.au/product/crew717](http://missiontoseafarers.com.au/product/crew717)



**Caring for Seafarers  
in Victorian Ports since 1857**

Several reports have been commissioned in the last year on the happiness and mental health of Seafarers that highlight the need for our continuing service. The Melbourne Mission has been working in the Ports of Melbourne in one guise or another since 1857, when Victoria was still a colony and only 22 years after Batman arrived. (Not that Batman as I had to inform one tourist to our city). Whilst circumstances of Seafarers has changed since The Bethel Union, and Rev Kerr Johnston's work on stamping out crimping, the lost and lonely life of a Seafarer is the constant.

The Seafarers' life was highlighted in a recent article in the New York Times, and gives everyone food for thought on global trade. Shipping companies and the Mission itself is working on reducing our impact on the environment, but at the core - Healthy, happy seafarers working under conditions that don't put them in danger, means that the environment is better protected from Shipping accidents and tragedies.

Keep these hard workers in your prayers, and our Mission in your hearts.

Reports can be found at:

<https://www.hellenicshippingnews.com/mental-health-and-seafarers-its-time-to-talk/>

<https://www.happyatsea.org/>

<https://www.iosh.com/media/6306/seafarers-mental-health-wellbeing-full-report.pdf>

Sue Dight  
Chief Manager.

## Dates for your diaries:

Keep an eye on our What's on Page.

### Heritage Tours at the Mission

Thursday 30 January 10:30am

Thursday 27 February 10:30am

Thursday 26 March 10:30am

Led by our experienced volunteers, step inside and hear the remarkable stories of the Mission to Seafarers. Discover the original use of the Norla Dome, visit the Chapel and explore our hidden garden and sun-drenched Spanish-style courtyard.

Tickets \$15 via [eventbrite.com.au](http://eventbrite.com.au)

-search Mission to Seafarers

LHLG Film release - February

Melbourne Celtic Festival - March 17

National Trust Heritage Festival - April

Day of the Seafarer - June 25

## Events at the Mission

Over the years, we've hosted so many wonderful and varied events - from weddings and birthdays, to theatre performances, exhibitions and live music. Every event helps to support our work looking after seafarers and maintaining our glorious heritage-listed building.



## Seafarers' centres

### Melbourne

717 Flinders Street  
Docklands VIC 3008  
[info@missiontoseafarers.com.au](mailto:info@missiontoseafarers.com.au)  
Opening hours  
10am to 10pm - 7 days.  
t. +61 3 9629 7083

### Geelong

MTS Flying Angel Club  
7 The Esplanade  
North Shore 3214  
t/f. (03) 5278 6985

### Hastings

Bayview Rd (PO Box 209)  
Hastings 3915  
t. (03) 5979 4327  
f. (03) 5979 4676

### Portland

PO Box 538  
Portland 3305  
t. (03) 5523 2776  
f. (03) 5523 5590

For Direct Deposit to our Bank  
account Seafarers Welfare Fund  
Bendigo Bank  
BSB: 633 000  
Account No: 133 811 216

Please put your surname as a  
reference and email your details  
for us to send you your tax  
deductible receipt.  
Name, Address, Phone and  
email contact.

*Looking for a unique venue for your  
next event? Contact*  
[daria.wray@missiontoseafarers.com.au](mailto:daria.wray@missiontoseafarers.com.au)

# Donation form

### Please accept my gift of:

☐ AU\$25 ☐ AU\$35 ☐ AU\$50 ☐ AU\$100 ☐ Other AU\$ \_\_\_\_\_

☐ My cheque is enclosed and made payable to: The Mission to Seafarers  
Victoria Inc. Or

☐ please debit my credit/debit card: Visa/Mastercard (delete as appropriate)

Card number:

Expiry date:  /  CCV:

Signature: \_\_\_\_\_

Date: \_\_\_\_\_

Name: \_\_\_\_\_

Address: \_\_\_\_\_

Postcode: \_\_\_\_\_

Email: \_\_\_\_\_

Telephone: \_\_\_\_\_

All donations over \$2 made to MtSV are **tax deductible**.

Keep updated via the website and Mission  
to Seafarers Victoria social media:



[facebook.com/missiontoseafarersvic](https://facebook.com/missiontoseafarersvic)



[mts\\_vic](https://www.instagram.com/mts_vic)



[@MtSVMelbourne](https://twitter.com/MtSVMelbourne)

Website: [missiontoseafarers.com.au](http://missiontoseafarers.com.au)

**\$25** supports the provision of phone and internet services  
for contact with home

**\$35** will support MtSV Ship Visiting

**\$50** will support emergency night call-out to help seafarers  
in distress

**\$100** will support the upkeep of MtSV on-shore facilities.



Caring for Seafarers  
in Victorian Ports since 1857

The Mission to Seafarers Victoria Inc  
717 Flinders Street Docklands Vic 3008  
[missiontoseafarers.com.au](http://missiontoseafarers.com.au)  
To Donate Online visit  
[givenow.com.au/missiontoseafarers](http://givenow.com.au/missiontoseafarers)  
Charity ABN: 69 302 106 434