



AUTUMN EDITION 2019

Ship to Shore



MISSION TO SEAFARERS VICTORIA Inc.

CARING FOR SEAFARERS IN VICTORIAN PORTS SINCE 1857

Weathervane Restoration

A phrase we can apply to every detail of our magnificent building, is how the considered beauty and detail of the marvellous handcrafted Mission weathervane has stood the test of time.

Of the many projects we have planned for 2019, one is to restore the weathervane and reinstall it on the rooftop.

The construction of skyscrapers around the precinct has led to wind tunnels being created, and the weathervane was battered by a particularly violent wind some two years ago which broke the armature and sent it on a precarious angle, leading us to bring it down. MtSV has secured a grant towards the project from the Victorian Heritage Restoration Fund, but we still need to raise a further \$5000 to ensure replacement of a suitable armature and rod fittings and to meet re-installation costs.

The weathervane is fashioned from copper in the form of a Galleon style sailing ship, with two pennants flying and two sails rigged atop, with a lower cross piece with the wind directions North, South, East and West. This representation reflects the core purpose of the Mission to Seafarers and the organisation's contribution to the wellbeing of the maritime industry throughout Australia's history.

Henry Alfred Saw (aka Harry) worked for a metal-working business located opposite the Trades Hall in Lygon Street, where he hand crafted the weathervane in late 1917. Brian Baker, Henry's grandson, describes the copper ship finial as a 'treasured creation' from its very origin, due to the high cost of copper during WWI. Henry Saw also made many toys for his grandchildren, including a complicated model railway after his retirement in 1950. Henry was "a true metal artificer as he was known, an art that has mostly been lost with time" (Brian Baker, 2016).

The weathervane is included as part of our building's heritage significance on the National Heritage List, as 'contributing to the unique aesthetic of the building, and holding historical, and educational significance for the local Victorian community.' It can be seen on the original architectural drawing of the street elevation below.

The project will require a master craftsman to properly assess the condition, then organise structural repair to the compromised components, clean the surface, remove old coatings, and apply a layer of microcrystalline wax to protect the surface.

The restoration work will be carried out at the Grimwade Centre. We are very excited about our goal of getting it back to its pride of place on our rooftop!



A wonderful etching from the early 1900's showing the pride of place our weathervane takes at the Mission.



Chief Manager's message



2019 – the year of getting things started.

As I sent out an email to our online subscribers of Ship to Shore to ask them to support us via a raffle called Play for Purpose, I was reminded of those who are our regular supporters and donors and how can we thank you for all that they do and give to support the Mission to Seafarers. I appreciate that you, our supporters, don't want us wasting money on frivolous campaigns that don't bring benefits to the Seafarers that we welcome to the Mission but we do need to find more people to support the Mission. We are working on a number of strategies to increase our supporter base, and become less reliant on holding our hands out to the same people all the time.

We celebrated 100 years in the building in 2017, this year the fabulous Norla Dome turns 100, however the whole place is really showing its age. The graffiti bandits have been attacking the outside, the windows in the Chapel need protection from the increase in traffic on Flinders Street, and the floor in the main hall area needs replacing - just to start the list. The floor is getting replaced this year via State Government funding, as well as a number of other minor repairs, but

the big project of bringing the Mission complex into the 21st century, whilst retaining all of its charm, takes time and most of all money.

As we move through 2019, you will see more stories about our history, as we uncover the connections and weave the threads from the images to the people that have been a part of the Mission's history and present. We are collecting these stories to build a bigger picture so we can tell all of Melbourne about the Mission, its history, the welfare work your support for the Seafarers and the big story about our plans for the renovation of the Mission.

The Mission to Seafarers Victoria will be launching a capital raising fund soon and we will be asking you to tell our story to your friends. Think about how you are connected to the Mission, how you became 'involved'. Was it a friend that introduced you, did you meet one of our fantastic volunteers, our Board members, are you in the shipping industry or one of our very caring parish people who remember us and our Mission to the Seafarers.

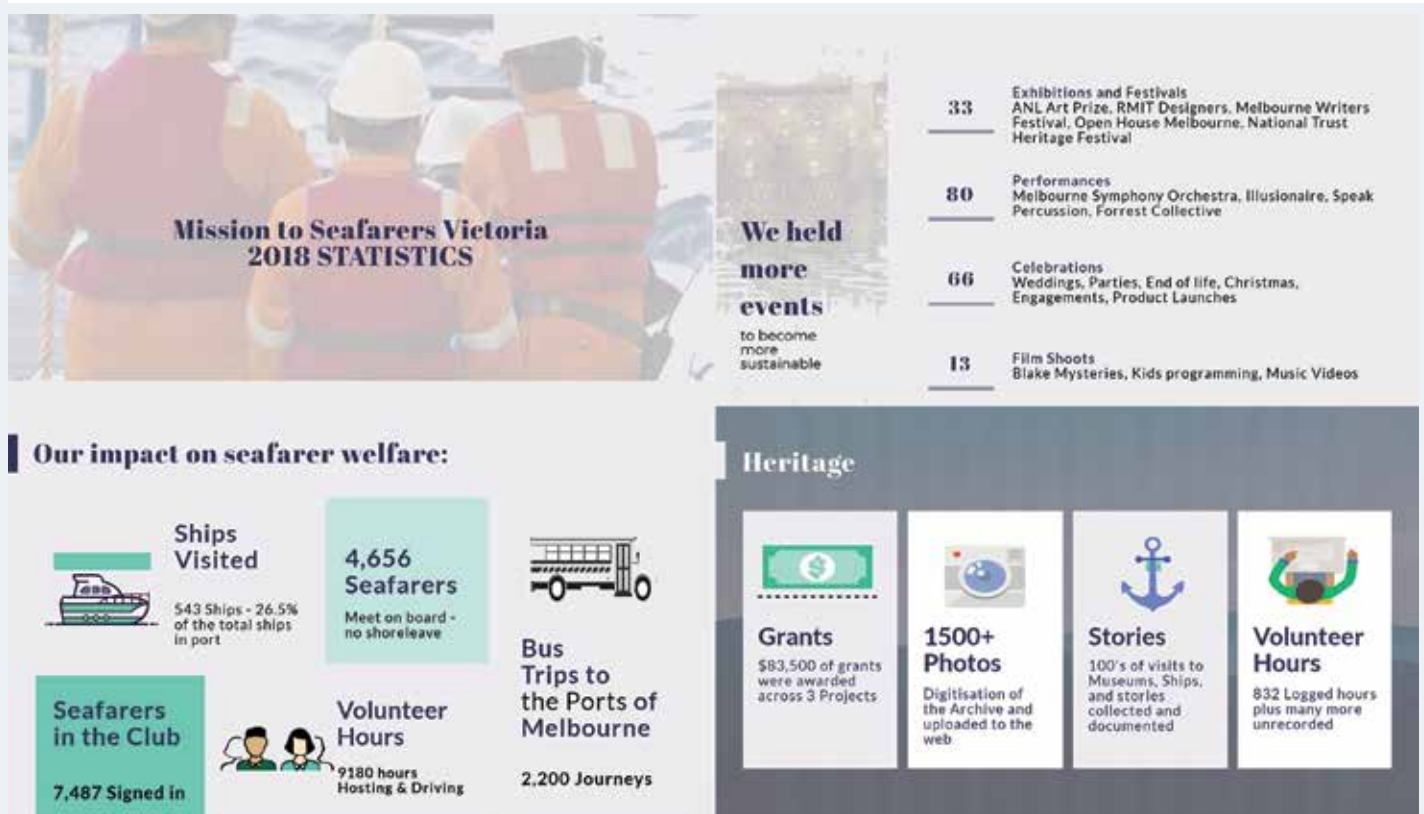
We would like to collect your stories too. Please write to me to let me know how you are connected, are you a Harbour lights Member, a Flying Angel, or were your family involved?

This year will bring challenges as we shift the Flying Angel club upstairs whilst the floors are fixed and ensure that there are only minor disruptions to the events we have booked. But we do have some exciting things happening such as the Fundraising Shield competition, the Annual Art Prize and Exhibition, and many public activities that you are all welcome to participate in. Please keep your eyes on the back page and Facebook.

Thank you for being part of the MtSV Community and we look forward to seeing you all throughout the year.

Sue Dight

Sue.dight@missiontoseafarers.com.au



Melbourne Bushwalkers

makes Mission to Seafarers its new home

Next time you visit The Mission to Seafarers the smiling face you see may not be a seafarer enjoying the hospitality, but rather a member of Melbourne Bushwalkers. The Mission to Seafarers is now the new home of the Melbourne Bushwalkers club, with regular meetings every Wednesday evening.

Founded in 1940 and forged from a vision of hope amongst those escaping the ravages of war-torn Europe, the club continues to welcome walkers of all backgrounds. Arguably the first mixed-gender bushwalking club in Victoria, Melbourne Bushwalkers embodies the spirits of adventure, inclusiveness and fun. Today it is a vibrant club with over 500 members, and several hundred visitors annually, exploring and engaging with the outdoors wherever their imagination leads them.

Since its formation Melbourne Bushwalkers has enjoyed accessible CBD locations. Steeped in tradition and a proud history that fits comfortably with the environment of The Mission to Seafarers, the club also has an eye to the future. The Docklands precinct has been undergoing significant change in recent years, with additional approved developments already in place that will continue to make a major transformation. In 2016 the estimated population of Docklands was around 11,000, predominantly in the age group 25-34, and expected to grow by 10% over the coming decade.

Boasting a growing number of members from the surrounding area the club aims to build on its new Docklands location to add value to residents and visitors alike. With an active program of more than three events a week for

all skill levels and ages - including training and mentor programs in navigation, first aid, leadership and basic back-packing equipment selection and use - there is plenty of scope for involvement, whether you are under 40, over 70, or anywhere in between. Gender balance has moved from around 38% female in 1980 to closer to 60% today.

It is only a few months since its move and the dust has yet to settle but already the club is feeling at

home. Not least in this adjustment has been the very helpful support of both the staff and volunteers of The Mission to Seafarers. We hope, over time, that we will be able to give back as much as we have received.

Check the club out at mbw.org.au or www.facebook.com/melbournebushwalkers/

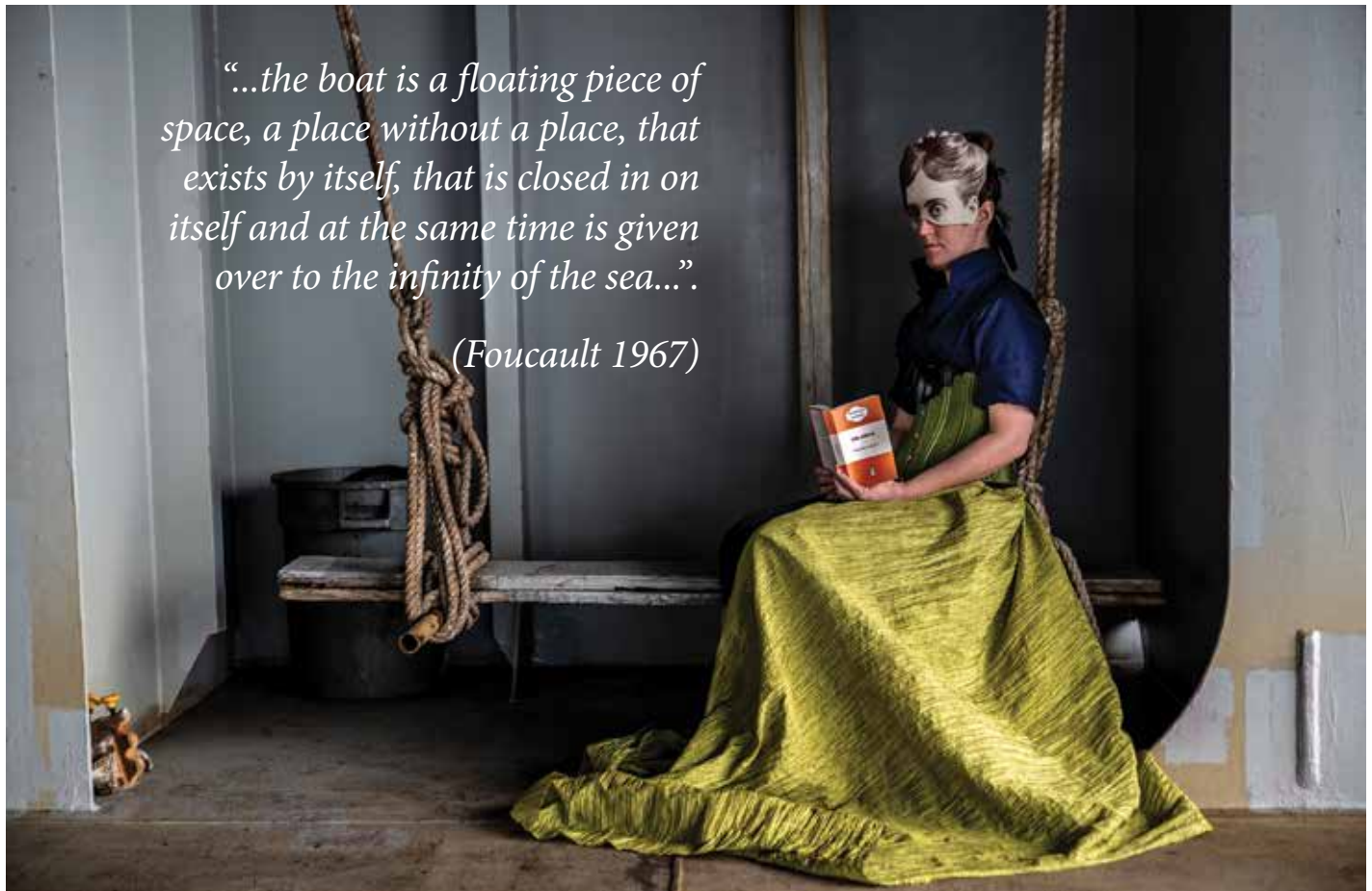
Ian Mair AM

President, Melbourne Bushwalkers Inc.



Top: Hiking along the coast on the Great Ocean Walk
Middle: Hiking in the Victorian Alps
Lower: Canoe trip on the Glenelg River, Victoria

At the Mission: The Place Between works by Clare McCracken



"...the boat is a floating piece of space, a place without a place, that exists by itself, that is closed in on itself and at the same time is given over to the infinity of the sea..."

(Foucault 1967)

On the 21st of July 2018, Clare boarded the vessel *ANL Wahroonga* and headed from Australia to China – an artist in residency, dwelling in motion for thirteen days. The route roughly mirrors that of her great-great-grandmother who travelled from Australia to Asia in 1874, a family narrative that has been passed down between generations in the form of a well-thumbed diary written during her adventure.

The Place Between was a one-day exhibition of the works created during the residency on the ship, exhibited in the Mission to Seafarers' Norla Dome. The work was a meditation upon the social, environmental and political implications of international trade, the mobility of women, our connection to the ocean and the place between Australia and the rest of the world in the 19th and 21st century.

The Place Between is part of a series of works created by Clare McCracken, exploring the impact of mobility systems (cars, planes, and ships) on Australia; and the way in which they have, and continue to, shape our connection to environments, our sense of time and social relationships.

It combined performance, photography, story-telling and film to create a mixed media series of works which wound together the artist's contemporary expedition on the ship, with that of her great, great, grandmother.

In doing so it created a poetic, generational image of the place we generally fly over - the place much of contemporary Australia ignores - between Australia and the rest of the world.



*Image above:
The Place Between: Orlando Floats.
Digital print on Ilford gold
84 x 56cm*

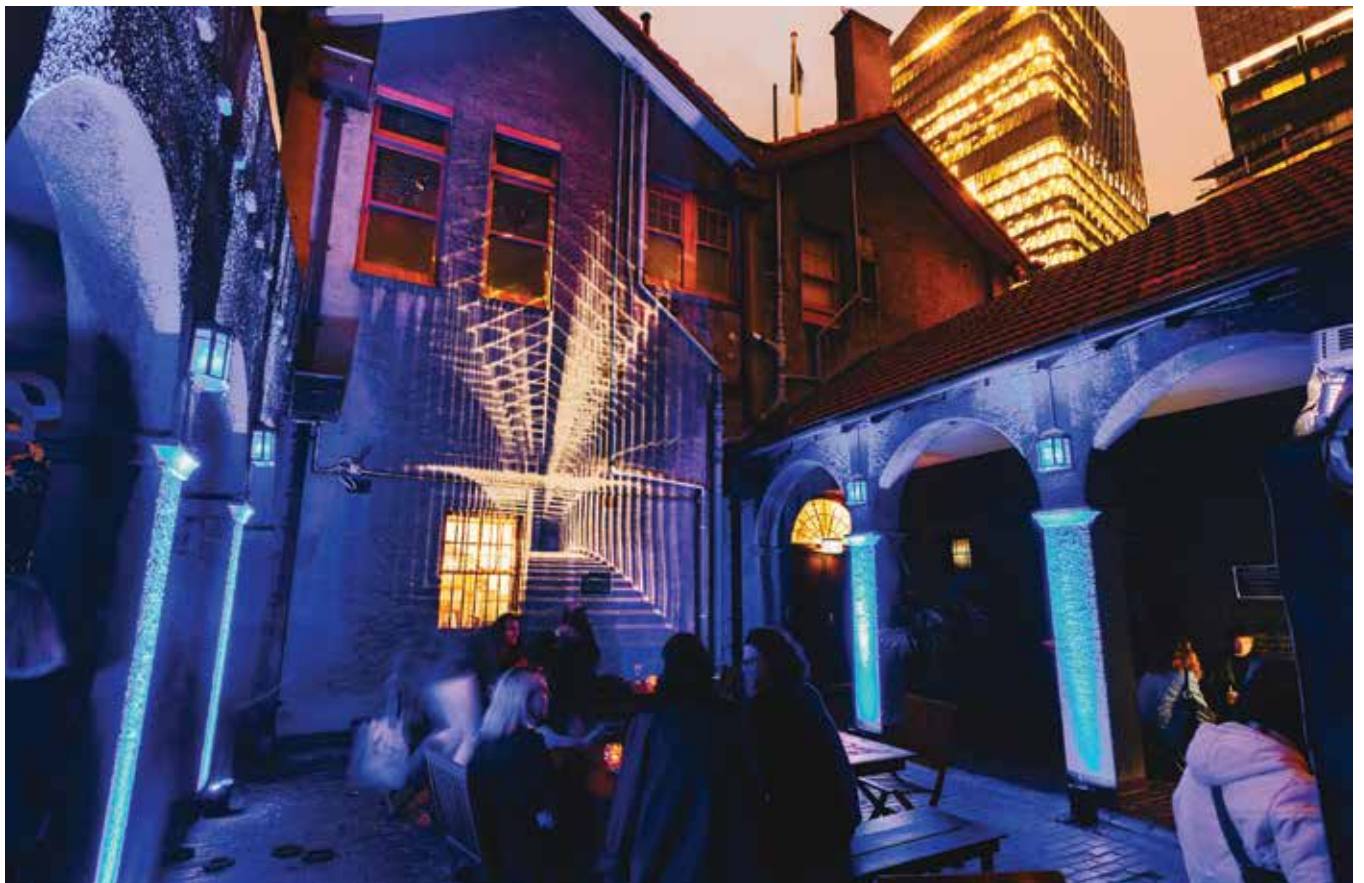
*Images left:
Atrophy 1, 2 & 3 (rust
detail from the ANL
Wahroonga) Cross-stitch*

Mission to Seafarers' Spellbinding Transformation for Melbourne Music Week

Melbourne Music Week (MMW) is an annual City of Melbourne initiative that celebrates the depth and diversity of Melbourne's thriving music scene. The nine-day program brings together independent promoters, venues, and businesses to create unique and dynamic events with the city's musicians and performers.

In 2018, we were delighted to once again host an event at the Mission as part of MMW. 'A Nice Warm Bath' was a breathtaking audio-visual experience featuring ambient and experimental producers, sound and visual artists. Exploring light, scent and projection they transformed the building into an extraordinary, magical wonderland.

Image credits: Briana Davis





Chaplains of the Mission: Right Reverend John Reginald Weller

b 1880 – d. 1969

Serviced at Mission to Seafarers 1924-1928.

John Reginald Weller was educated in England and initially pursued an occupation as a tea planter, but was eventually ordained in 1914.

In the collection we hold a good many images of Chaplain Weller, who seems to have been equally at home with the crews aboard ships as with the leading families of Melbourne and Victoria. Interestingly he seems to have been both an enthusiastic cameraman and a very keen bushwalker and camper.

In the past year, we have discovered more about Rev'd Weller.

His long career took him to many different postings around the globe. In 1917 he was listed in the London Gazette as a military chaplain. He is also listed as serving in Delhi, Mesopotamia, Waziristan and Quetta. He first appears in Melbourne in the Mission's Annual Report of 1923, accompanied by his wife and being welcomed by the Ladies Harbour Lights Guild (LHLG). The Wellers had the good fortune to dovetail with the experienced Reverend Gurney Goldsmith (MTS 1905-1924) who, after 18 years of dedicated service and the establishment of two Central missions in (1907 and 1917), retired as a result of poor health in 1924.

Reverend Weller's appointment at MTS as Senior Chaplain officially commenced in 1924 and his term lasted until the end of 1928. After he completed his term in Melbourne he was eventually appointed to Merseyside in the UK, and in later years, appointed to the episcopate and made Bishop of the Falkland Isles. Contact with 'Bishop Weller' is mentioned some years later in the Mission archives. A

biography published by his nephew, John, in 2008, notes that 'Uncle Jack' was later responsible for much of the Anglican diocese of South America up until the 1940s. We have been able to locate a copy of the biography, "The Flying Bishop". It features an excellent portrait of Reverend Weller, recognizable in many of the Mission images we hold in the Heritage Archive.

It may well be that the Mission Archivists are indebted to Chaplain Weller and the members of the LHLG who enthusiastically embraced the

portable 'camera craze' of the 1920s and 30s. Chaplain Weller was certainly instrumental in securing access to the ground at Fishermen's bend for use by the seafarers for football and cricket on holidays and Saturdays. He notes in one of his annual reports that "with the generous help of shipping companies a small shed was built as a change room".

It is clear that Reverend Weller valued the LHLG for their support and organisational skills, especially during the challenging days post WW1. Key office bearers, Miss Godfrey and Miss Tracy, did much to smooth the organisational path as did the younger generation of Mrs. Oxley and Dora Simpson and others, all of whom are represented in the photographic record. We are very fortunate that Reverend Weller chose to document not only Mission events and the challenging and interesting times of the era, but also that he sincerely respected seafarers and captured some rare images of life aboard ship and at the Docks and wharves during his term as Chaplain of the Mission to Seamen.

Sources:

[en.wikipedia.org/wiki/John_Weller_\(bishop\)](https://en.wikipedia.org/wiki/John_Weller_(bishop))
(accessed 29 October 2018)

London Gazette, 4th supplement 14th of December 1917
www.bol.com Publishers, accessed 29 October 2018

MTSV archive: Annual Reports and LHLG newsletters
various.



Reverend Weller was fond of bushwalking



Reverend Weller on a ship viist



Reverend Weller aboard the SS Marken (second from left standing.)

CONGRATULATIONS: Australia Day Honours 2019

The Mission to Seafarers Victoria congratulate Ms Leigh MacKay, Dr Jackie Watts, and Mr Graeme Williams, for their recognition in the 2019 Australia Day Honours Roll.

MEDAL (OAM) OF THE ORDER OF AUSTRALIA



Ms Leigh MACKAY: For service to the Anglican Church of Australia. St Paul's Cathedral

Leigh Mackay has been a dedicated supporter of the Mission to Seafarers for many years, and as a highly experienced lawyer has provided us with legal advice together with heritage, arts, philanthropy and Anglican Church advice, both as a Mission Board member, and friend. Leigh is dedicated to our principal cause of providing seafarer's welfare, and in the preservation and practical usage of our building.

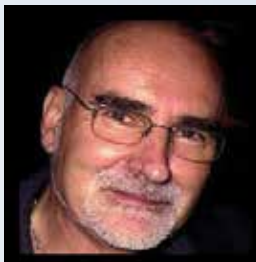
MEDAL (OAM) OF THE ORDER OF AUSTRALIA IN THE GENERAL DIVISION



Dr Jacqueline WATTS: For service to local government, and to the community of Melbourne.

Dr Jackie Watts is a strong supporter of the Mission and OSSA (Offshore Specialty Shipping Association) and is working hard towards the establishment of a recognised Melbourne Maritime Precinct based across Docklands, Seaworks (Williamstown) and surrounding areas, that will acknowledge Melbourne's vital maritime heritage and advocate for better utilisation of our waterways.

MEDAL (OAM) OF THE ORDER OF AUSTRALIA IN THE GENERAL DIVISION



Mr Graeme Henry WILLIAMS: For service to the visual arts.

Graeme Williams has been associated with MtSV since 2012 as he is a leading Judge for the ANL Maritime Art Prize. He is also a member of the Art Prize Committee. Graeme is a Board member and Chairman of the Artistic Committee of the Lorne Sculpture Biennale, and is highly involved in a number of other sculpture awards and art collections.

Before and after – a conservation success! / ||| ■■■ Public Record Office Victoria

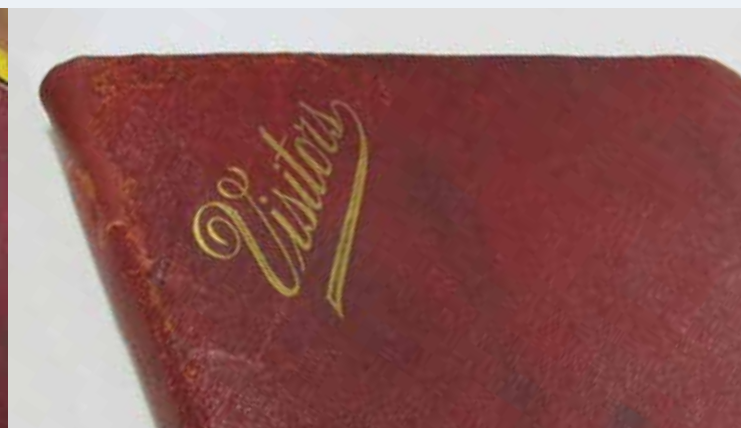
In 2018 MtSV were the grateful recipients of a Victorian Local History Grant. This resulted in funds to preserve an important Visitor Book, recording a half century of local and international visitors between the years 1907 – 1951.

As you can see from the before and after images, conservators at the Grimwade Centre for Material

Culture Conservation were able to stabilise and restore the torn red leather cover, secure the pages so that none are lost and provided a customised storage box.

Such a procedure helps us preserve original and significant documents.

By Jay Miller



VOLUNTEER PROFILE:

John Winkett – SHIP VISITOR



It was at the gospel choir I sing with that I met fellow Ship Visitor, Tony Correll. We got chatting and he told me about the role of ship visiting and I couldn't resist!

I started out accompanying Tony in June-July last year, then started going on my own. I've been fascinated by ships since I was a kid, and the chance to get on board some of the monsters of the sea is exciting to me! More importantly, I find meeting up with crews from around the world very valuable. They love the opportunity to talk to someone new after being at sea for so long. They always want to talk about their families and their home country. Fortunately I have travelled to many of the places they are from. Many crew are from the Philippines, and I am familiar with their country, so that makes a difference.

I am married to Christine and we have three children, and eight grandchildren, who all now live in Melbourne. I have been a member of St Margaret's Anglican Church in Eltham for over 20 years and in the past I have served on the Vestry as well as being a warden. Outside the Church my main interests are singing in my gospel choir,

woodwork, and keeping up with grandchildren and their various sports.

We came to Australia in 1972 with the advertising company that I worked for but left that industry in 1985. Prior to retirement I worked as a consultant in the Not for Profit sector for 10 years and before that I worked for World Vision. I started out in NSW as State Manager, and was invited to Melbourne to set up the Corporate Relations Division, working as the National Operations and Corporate Relations Manager. One of my projects was the 'Gift in Kind' program. We received donations of, eg. Ambulances, fire-engines, and medical equipment, which we shipped to Lebanon during the civil war.

Christine and I enjoy our garden and plenty of travelling. In June - July this year we are off to France and England with a couple of stops on the way there and home. I also have a passion for railways that manifests through my collection of books on English steam railways from the 1950s, 60s and 70s. I enjoy travelling by rail as often as possible.

YOU MAY QUALIFY

The MtSV offers a 20% discount on venue hire fees to Community and Not for Profit Organisations.

Contact:
info@missiontoseafarers.com.au

20% OFF



WEDDINGS
PARTIES
EVERYTHING

CONFERENCES
MEETINGS
FUNCTIONS

Notes from the Garden: Summer 2019

"It's summer at last, and as I write we are expecting a 43-degree day! Poor plants!

I try to get to the Mission at least once a week to check on the new plants and of course to water the pots.

Some of the things I planted don't like life at the Mission at all. I guess because of the very sandy soil. I'm just going to take those things out and replace them with plants I know will be okay. One plant that seems to like any soil is the Smoke Bush (*Cotinus Coggygria*). You may not know this one, but I think you'll really like it. It will get quite big - about 3 metres high. It has big purple leaves that change to red in the autumn. The flowers are a rosy purple but so tiny that it looks like smoke from a distance. Beautiful.

As you know I filled in the old pond because I couldn't repair it and I also thought we should fence off any body of water easily accessible to children. But how about a bird bath? When I start gardening now a little magpie lark follows me around just hoping I will stir up insects for his lunch. He would love a bird bath and I'm hoping it would attract other birds to our garden.

By Maureen Scoble, volunteer



Christmas Generosity

In the weeks leading up to Christmas, the Mission, joined forces with ANL Containers, to put together over eighty gift bags for visiting seafarers. Included in the gift bags were hi-vis shirts, donated by DP World, confectionary from the First Fleet Association, and all manner of items from generous individuals in our community, including toiletries

(thanks Dianne!), Christmas Puddings and the ever-popular knitted beanies.

These were distributed to the men and women who were scheduled to be out at sea on Christmas Day, with the hope that they would feel a little bit more appreciated and special on the day, via the Mission to Seafarers. Thank you too, to those who donated mobile SIM

cards to help seafarers stay in touch with family at Christmas.

Our staff Christmas party on Tuesday 18th December was a special occasion for the Mission to show its thanks and appreciation to all volunteers and staff, who gathered together to share a lovely meal and a yarn in celebration of the festive season.



Christmas Gift Bags for Seafarers

Volunteer's other life: Ken Dusting

The ongoing fight to save our marine environment

My name is Ken Dusting and I'm one of the regular bus drivers who volunteer at the Mission to Seafarers, and have been doing so for some two years. When I'm not at the Mission I'm working in South East Asia or South Pacific Island countries as a Strategic Management Advisor/Mentor for Australia Business Volunteers. During 2018 I undertook two assignments in Timor-Leste, most recently at an eco-lodge on Atauro Island.

Atauro Island is 21 nautical miles off Timor-Leste's capital Dili, and is home to approximately 10,000 people who are mostly subsistence farmers and fishermen. The waters around the island are very rich in marine life and are officially one of the areas with the most bio diverse marine life forms on our planet. The marine diversity comes in all shapes and sizes, from tiny corals and coral fish to giant blue whales.

Due to the low impact farming methods, and the deep-sea trench (4,000 meters) running around most of the island, the corals have not suffered from bleaching or pollution. The island is also still in near pristine condition as it has not been discovered by international fishing or the tourist industry. However, *plastics and other waste discarded by passing ships, neighbouring Indonesian islands* and in some cases from the local villages and tourists, do pose a real hazard to the environment.

My wife Robyn and I first arrived on the island in 2010 and have collected the waste from the beaches whenever we were working on the island ever since. Over the years, many of the guests at the lodge including Australian school groups have assisted us. More recently we have been joined by an English based Marine Science and Diving group operating on the island. Our waste management program has now developed to the stage where all waste is sorted and segregated into various types and reported online to an Australian based charity, *Tangaroa Blue*.

Tangaroa Blue monitors the health of our marine environment and coordinates the Australian Marine Debris Initiative. Our next step in controlling the waste is putting a value on it and putting it to good use. To this end, land has been acquired and a small building has been constructed to house equipment and facilities to turn some of the waste plastics into useable building construction materials. The lodge and waste management group is now raising funds to purchase the shredding and processing equipment with a view to having it up and running by mid-2019.

Ken Dusting, January 2019



Atauro Island,

*21 nautical miles off
Timor-Leste's capital
Dili*

*Atauro Island is
home to about 10,000
people who are mostly
subsistence farmers and
fishermen*



Tony Correll- Ship Visiting Cruising - one way of returning to Australia from Great Britain



As a ship's visitor, it is hard to imagine what it is like to suffer from sleep deprivation, enduring several days of 5 metre swells. I decided that the best way to understand is to try; and to experience it by taking a ship from England to Singapore? I could then also drop in on Seafarers' Centres on the way to see how they operate and observe, at first hand, the lives of cruise ship crews.

My bride of many years - Madge, set out from Southampton and after visiting Le Havre, and the Stella Maris centre there, headed for Lisbon. The anticlimax of sailing through the Bay

The cruise continued though the Mediterranean Sea, Spain, France, Italy, Malta and Greece. The seafarers' centres were either well advertised with big road signs, or hidden in a back street. Sadly some were closed. What chance did the seafarers have? Did the cruise ship receive details of what each town offered? Crew free time, for some, is when we passengers are off sightseeing, and that is, at the most, four hours. They don't have time to waste seeking and searching.

After the Suez Canal, Aqaba was the next stop. The mission was alive and vibrant, but tucked away in the

ship, had been there. Where did they go? Would the centre have met their needs anyway?

Back on ship, I sought out the Crew welfare officer, hoping to glean information on how Melbourne, could better serve the needs of a Cruise ship crew in the very limited time they have ashore. The normal day for crew members was 12 to 13 hours long. One of the Christian pastors on board, told how, when he offered a special time of sharing with the crew, they would meet near midnight, forgoing their sleep time, just to enjoy that short, special time.



of Biscay with less than a metre of swell was repeated across the whole journey. To experience 'real' weather I am going to have to hitch a ride on a container ship to Freemantle and experience the Great Australian Bight and its temperament.

I did have more success visiting Seafarers' centres. Le Havre had a cosy, welcoming ambiance; eggs and bacon were being cooked in the Gibraltar kitchen as I walked in, but no seafarers. Toulon, did not appear to have a seafarers' centre yet it was here that I found a COFICIEL "dismountable" filled to overflowing with crew members sitting along the sides chatting with their families using the free WiFi provided by "the Seamen's Club". Heaven only knows what time it was back home, and who provide this facility? Toulon is famous as a navy base! Maybe it is ingrained in their culture and heritage to care for seafarers.

"Christian" part of town. The bus was ready for a call, but it was mostly for cargo and not cruise ships. After several days at sea the ship docked at Dubai. Alas, all the staff from the Mission to Seafarers were out of town. The International Seafarers' Centre was open and welcoming. Built on land donated by the city, it sported a swimming pool, tennis and soccer fields. It was so close to the port that busses were not supplied, the local taxis were the means of access.

After Dubai, India, Sri Lanka and Malaysia were the last three ports before Singapore. Cuchin's centre was close to the port but the shore excursion ran late and it was too dark to risk a visit. Colombo was different, the centre, dating back to Portuguese times, was 250 years old, and needed freshening up, but it was there and relatively easy to find, but none of the crew, who had time off and with whom he chatted with on the way back to the

Here in Melbourne, as a terminus port, the house keeping crew are busy cleaning and preparing cabins (State Rooms) for boarding passengers, so they have no chance of going ashore. All crew, have a great need to communicate with family. WiFi on board is not free! Having experienced the care that the crew gave to us and the other passengers, I am determined that we in Melbourne must extend the care we already give to cargo ship crews to our cruise ship crews. We have to find the most time effective way to "be there" for our visiting cruise crews, and then muster a crew of volunteers to make their short time in Melbourne memorable. This is an opportunity for any who have been on a cruise, to express their thanks by offering to volunteer. Who cares? We do! Why? We do it because we can!

Until next issue, catch a wave.

Corporate Memberships

Corporate Memberships are a wonderful opportunity to support the ongoing services to Seafarers that the Mission provides.

The need for additional seafarer services in the Port of Melbourne is growing; as outlined in the 2050 Port Development Strategy Discussion Paper which shows the increase in ships visiting our Port. Our Ship Visitor Program is currently only able to support seafarers on board five-six days a week. With the number of ships increasing in the last ten years the MtSV is keen to expand our programs to support this workforce. We aim to recruit a new full-time staff member to deliver our welfare programs and train, support and mentor four extra ship visiting volunteers. This will assist the MtSV to provide an additional 12,000 seafarers with support services annually. The annual funding required for this is \$60,000.

Every day we receive between five to sixty seafarer calls to the MtSV in request of our on-demand free bus service from the ship into the city. We also transport seafarers to appointments and help them run other errands and in 2018, we made 2,200 bus trips to and from the Port at a cost of approximately \$30,000 (maintenance of the two buses and petrol costs.)

The ITF Seafarers' Trust and the World Maritime University recently launched an online seafarer welfare training program that is designed to equip maritime professionals with skills and knowledge to support the welfare of seafarers. To ensure we continue providing a best-practice service we are seeking funds for the manager of our welfare programs to participate in this program.

We rely on the generosity of industry sponsorship, philanthropy and individual donors from the community to fund our services.

Our team comprises of 45 volunteers, and 6 staff, 3 of whom are part time.

This is the first program of its kind to deliver a comprehensive overview of the topics and issues that relate to seafarer welfare. This training program costs \$2,500.

There are many other ways your organisation can support the MtSV, here are some:

- ESTABLISH a Workplace Giving Program. Including a matched giving incentive to your staff can significantly increase donations.
- HOST your next event at the MtSV
- ORGANISE a MtSV talk for your staff or a fundraising activity at your workplace to raise money for our welfare programs and encouraging them to join the fundraising shield competition
- JOIN our Corporate Volunteering Program
- GIVE staff the opportunity to join our new fundraising and outreach committee and attend meetings during work hours.

We are looking for volunteers to help us establish an annual fundraising event for the industry.

JOIN IN THE FUNDRAISING SHIELD COMPETITION

The Mission to Seafarers Vic invites your association or company to form a team to fundraise in support of the Mission's welfare programs.

We are all part of the same community, so let's do what we can to fundraise and make it as fun as possible!

To register your team, go to www.givenow.com.au/missiontoseafarers and click on the 'Create a CrowdRaiser' button to get started.

You can set your own goals - we encourage you to select a figure you think is achievable - if you go beyond your goal - Yay! We want you to have fun and no amount is too large or too small.

The Mission will provide free venue hire for any fundraiser held at the Mission.

What's in it for you?

- Team Building
- Fun
- Social media coverage on the Mission social feeds for your event and company/association
- Opportunity to win the annual MtSV fundraising shield with year round exposure (it is highly competitive) - Awarded in October at the annual trivia night
- Healthy and happy seafarers that support your job

Your event can be promoted across all our key channels, including to:

- Twitter followers
 - Facebook fans
 - Pinterest and Instagram followers
 - 4.5k newsletter subscribers
- Only 8 months to go!



Seafarers Wellbeing



Recent articles in The Maritime Executive and other publications have again put a spotlight on the mental health of seafarers. Confirmation through industry statistics show that mental illness is a growing concern at sea, and is now reflected in P&I club claims data. The Standard Club has seen an increase in mental-health-related claims since 2015.

Ray Barker, head of operations at the International Seafarers' Welfare and Assistance Network (ISWAN), has said "Over the last four years, ISWAN has noticed an increase in

the number of seafarers calling our helpline suffering from a variety of mental health issues. There is also a consensus that the number of seafarer suicides has increased."⁽ⁱ⁾

Regardless of the numbers, a suicidal seafarer is not good for anyone on board a ship. Apart from the suffering of the individual involved, there are potentially huge risks that their unexpected actions, reactions or even inaction could have on other people, property and the environment.

Many factors to address

With so many factors that can adversely affect mental health at sea, including: social isolation, long voyages,

fatigue, separation from family, increased pressure, lack of crew cohesion, lack of shore leave, harassment and bullying, post-traumatic stress, poor physical health, bad diet, lack of exercise and precarious employment; what can be done?

A holistic approach is required, one which monitors and nurtures every aspect of a seafarer's wellbeing and happiness. On board exercise and care by the shipping companies of course, but one thing the Seafarers miss most is **Shoreleave**.

Shoreleave is a valuable commodity for seafarers, the chance for a change of environment and a means of relaxing is so important. After weeks, possibly months at sea, what better than some fresh (non salty) air, the grass beneath the feet and an escape from the constant noise and throb of the vessel? Alas, many seafarers are seemingly denied these basic rights.

The second quarter report of the Seafarers Happiness index for 2018⁽ⁱⁱ⁾ shows a decline in overall seafarer happiness, but an increase in satisfaction of welfare services on shore.

We continue to serve the Seafarers in the Ports of Melbourne as we have since 1857, and happy, healthy seafarers are our main goal.

(i) *The Standard Club, Standard Safety: Seafarer Wellbeing, October 2018*

(ii) <https://www.happyatsea.org>

CALL OUT FOR VOLUNTEERS!

Mission to Seafarers

717 Flinders St, Docklands VIC 3008
info@missiontoseafarers.com.au
(03) 9629 7083

The Mission to Seafarers is a not-for-profit organisation that cares for the welfare of the international seafaring community.

There are many opportunities for volunteers including: meeting and chatting with visiting seafarers, serving drinks to our regulars, driving our shuttle bus to and from the docks, maintaining the garden, heritage research and IT assistance.

If you have skills and time to share along with a passion for the welfare of others, we'd love to hear from you. Just four hours a fortnight can make a huge difference!

THANK YOU!

MtSV can only continue its work with the support of donors.

Thanks to our amazing Beanie knitting teams!

Country Women's Association International
Community and Support Committee

Joyce Fletcher from Druin

S. Vance from Eli Waters, Queensland

St Barnabas, Glen Waverly M.U. and Friends

Mothers Union: Saint Eanswythes Anglican
Church, Altona

The CWA, Frankston South branch

Please keep them coming - It may be summer
here, but out on the oceans it can be very
cold!

How to:

We also have had requests for very simple
gloves. They allow the seafarers to go about
their work and are an easy introductory
pattern for novice knitters.

*"Knit a square of 20cm x 20cm. Purl, plain or
cable if you are feeling fancy. Stitch it up into
a cylinder leaving room for the thumb to pop
through, about 6 or 7cm from one end. Just
ensure when you cast on and off it is tight, so
they don't unravel."*

A huge thank you to Rod Georgiou who
generously donated brand new glasses for
the bar, so we won't run short this Art Prize
opening night!

Letting your Legacy live on

Leaving a gift to The Mission to
Seafarers in your will is a wonderful
way to celebrate all the joy in
your life by supporting those who
sacrifice so much for us at sea.

Your donation will help the team to
be there when seafarers need them
most. You can help us to fight for
the rights of abandoned seafarers,
to care for victims of piracy, to give
advice and help to support the
seafarers experiencing the mental
strain of life at sea.

A gift of any size will make a real
difference to the 60,000 seafarers to
Melbourne who risk their lives to
bring us the vital goods we need to
survive.

Please contact Sue Dight to find out
more about leaving a tax deductible
gift to The Mission to Seafarers
Victoria in your will by emailing:
sue.dight@missiontoseafarers.com.au



For just \$1 per week your
membership helps the Mission
provide services to those who work
at sea.

Membership benefits include:

- Discount on alcohol at the Mission
to Seafarers Bar
- One guest ticket to the Members'
Private Preview Evening of the ANL
Maritime Art Prize and Exhibition
- 10% discount on venue hire
and event packages including
Norla Dome or Celia Little Room
for private dinners, parties and
corporate seminars; and St Peter
the Mariner Chapel for weddings
and other ceremonies
- Free use of the BBQ in the
Spanish style courtyard (booking
required)
- Invitation to the annual Seafarers
Service at St Paul's Cathedral in
October
- Copy of "Ship to Shore" magazine
- Regular member promotions,
discounts and events

**Renew or join now and your
membership is valid for 12months.**

Our website has the full details:
[missiontoseafarers.com.au/product/
crew717](http://missiontoseafarers.com.au/product/crew717)

**The Mission needs a battery powered leaf blower to keep the outdoor spaces tidy.
If you have one that you no longer need we would be pleased to pick it up.**



An Apology

In the Spring edition of "Ship to Shore", Page 3, in the Annual Seafarers' Service article, we made a regrettable omission. We inadvertently failed to mention MTSV Board member and Master Mariner Alan Knott, as a member of the Service Planning Committee who acts as Secretary, liaising with the Cathedral staff, planning VIP seating, noting VIP invitation confirmations etc. We give our sincere apology to Alan for this omission.



Caring for Seafarers
in Victorian Ports since 1857

The New Year is here and there are so many things that we have to be thankful for. There are many thankless jobs that are done in and around the Mission, but if not acknowledged, they are appreciated.

Your contributions are welcomed and if we haven't acknowledged you - Thank you.

There are many ways to contribute and as they say 'if you don't ask, you don't get.' So we have a short list of "things" that would make the Mission a better place.

We are missing items for our Heritage Centre. Items relating to our Centre's history and the Ladies Harbour Lights Guild. We put out a call and have had one great collection donated. Do you have anything to add? Do you have any old (working) ipads or tablets lying around? If they still connect to wifi, we can use them to ask the seafarers to sign in on.

Get in touch anytime, as you never know where a conversation might lead.

Sue Dight
Chief Manager.

Dates for your diaries:

- March 11 Labour Day
- April 18 National Trust Heritage Festival opens
- April 19 Good Friday
- April 20 Easter Saturday
- April 21 Easter Sunday
- April 22 Easter Monday
- April 25 ANZAC Day
- April 25 Stories of the Past guided heritage tour April 27 - 28 Practice Makes Perfect: Artisans Demonstration Weekend Mission to Seafarers Victoria Rare trades practitioners will showcase crafts relevant in the time the magnificent home of the Mission to Seafarers was designed and constructed. See displays and demonstrations by master artisans in the unique setting of the Spanish Mission style building. (10am - 4pm)
- May 1 Entries Open for ANL Maritime Art Prize
- May 11 Stories of the Past guided heritage tour May
- May 18 Stories of the Past guided heritage tour May
- May 19 National Trust Heritage Festival concludes
- June 25 Day of the Seafarer
- July 14 Sea Sunday
- July 27 & 28 Open House Melbourne
- August 30 Entries Close for ANL Maritime Art Prize (5pm)
- Oct 4 to 20 our annual ANL Maritime Art Prize
- Oct 13 Annual Seafarer Service at St Paul's Cathedral

Contact our Events Manager, Daria Wray, at daria.wray@missiontoseafarers.com.au to discuss hosting your best ever function!

Seafarers' centres

Melbourne

717 Flinders Street
Docklands VIC 3008
info@missiontoseafarers.com.au

Opening hours

10am to 10pm - 7 days.
t. +61 3 9629 7083

Geelong

MTS Flying Angel Club
7 The Esplanade
North Shore 3214
t/f. (03) 5278 6985

Hastings

Bayview Rd (PO Box 209)
Hastings 3915
t. (03) 5979 4327
f. (03) 5979 4676

Portland

PO Box 538
Portland 3305
t. (03) 5523 2776
f. (03) 5523 5590

For Direct Deposit to our Bank
account **Seafarers Welfare Fund**
Bendigo Bank
BSB: 633 000
Account No: 133 811 216

Please put your surname as a
reference and email your details
for us to send you your deductible
tax receipt.
Name, Address, Phone and
email contact.

For further details email:

marketing@missiontoseafarers.com.au

or keep updated via the website and Mission
to Seafarers Victoria social media:



facebook/missiontoseafarersvic



mts_vic



@MtSVMelbourne

Website: missiontoseafarers.com.au

Donation form

Please accept my gift of:

☐ AU\$25 ☐ AU\$35 ☐ AU\$50 ☐ AU\$100 ☐ Other AU\$ _____

☐ My cheque is enclosed and made payable to: The Mission to Seafarers
Victoria Inc. Or

☐ please debit my credit/debit card: Visa/Mastercard (delete as appropriate)

Card number:

Expiry date: / CCV:

Signature: _____

Date: _____

Name: _____

Address: _____

Postcode: _____

Email: _____

Telephone: _____

All donations over \$2 made to MtSV are tax deductible.



Caring for Seafarers
in Victorian Ports since 1857

The Mission to Seafarers Victoria Inc
717 Flinders Street Docklands Vic 3008
missiontoseafarers.com.au
To Donate Online visit
giveinow.com.au/missiontoseafarers
Charity ABN: 69 302 106 434

- \$25 supports the provision of phone and internet services for contact with home
- \$35 will support MtSV Ship Visiting
- \$50 will support emergency night call-out to help seafarers in distress
- \$100 will support the upkeep of MtSV on-shore facilities.